

# NAVTEX

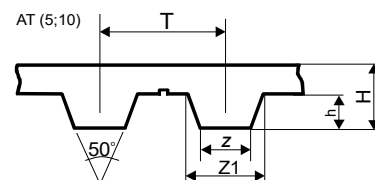
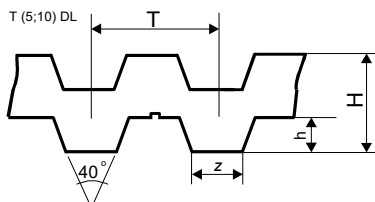
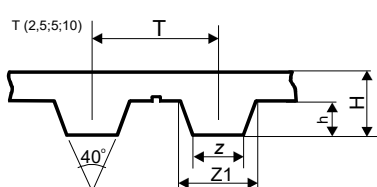
Zapoge 34, 1217 Vodice, Slovenija

Tel : 041 414 103, Tel : (01) 832 41 03, Fax : (01) 833 24 03, E - pošta : [navtex@siol.net](mailto:navtex@siol.net),

[www.navtex.si](http://www.navtex.si)

## PROFILI STANDARDNIH ZOBATIH JERMENOV Z DIMENZIJAMI

### - Zobati jermeni - metrične delitve :



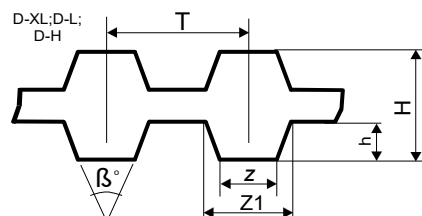
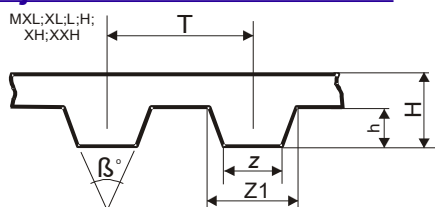
PROFIL :	T	H	h	z	Z1	$\beta^\circ$
<b>T 2.5</b>	2,5	1,3	0,7	1,0	1,5	40°
<b>T 5</b>	5	2,2	1,2	1,8	2,65	40°
<b>T 10</b>	10	4,5	2,5	3,5	5,3	40°
<b>T 5 DL</b>	5	3,4	1,2	1,8	2,65	40°
<b>T 10 DL</b>	10	7,0	2,5	3,5	5,3	40°
<b>AT 5</b>	5	2,7	1,2	2,5		50°
<b>AT 10</b>	10	5	2,5	5		50°

Standardne širine jermenov :			
4,6,8,10,12 mm			
6,8,10,12,16,20,25,32 mm			
10,12,16,20,25,32,50 mm			
6,8,10,12,16,20,25,32 mm			
10,12,16,20,25,32,50 mm			
6,8,10,12,16,20,25 mm			
10,12,16,20,25,32,50,75 mm			

Primer označevanja : - **PU 20 T10 840** ( **PU** – Poliuretan )

**20** - Širina jermena 20 mm, **T10** - Delitev T10 = 10 mm, **840** - Dolžina jermena (mm)

### - Zobati jermeni - colske delitve :

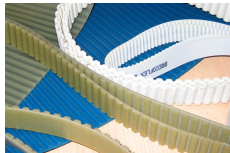
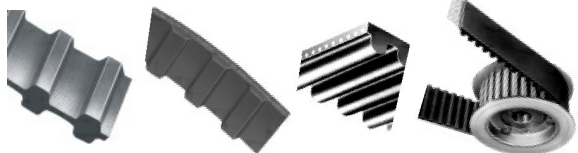


PROFIL :	T	H	h	z	Z1	$\beta^\circ$
<b>MXL (0,08")</b>	2,032	1,2	0,5	1,14		40°
<b>XL (1/5")</b>	5,08	2,25	1,25	1,35	2,57	50°
<b>L (3/8")</b>	9,525	3,5	1,9	3,2	4,65	40°
<b>H (1/2")</b>	12,7	4,3	2,3	4,4	6,12	40°
<b>XH (7/8")</b>	22,225	11,2	6,35	12,57		40°
<b>XXH (1 1/4")</b>	31,75	15,7	9,5	19,05		40°
<b>D - XL (1/5")</b>	5,08	3,01	1,25	1,35		50°
<b>D - L (3/8")</b>	9,525	4,56	1,9	3,2	4,65	40°
<b>D - H (1/2")</b>	12,7	5,97	2,3	4,4	6,12	40°

Standardne širine jermenov :			
mm :	Koda :	mm :	Koda :
3,2	012	38,1	150
4,8	019	50,8	200
6,4	025	76,2	300
7,9	031	101,6	400
9,5	037	127	500
12,7	050		
19,1	075		
25,4	100		

Primer označevanja : - **600 H 200**

**600** - Dolžina jermena 60" (1254 mm), **H** - Delitev 1/2" (12,7 mm), **200** - Širina 2,0" (50,8 mm)



# NAVTEX

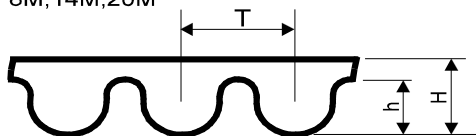
Zapoge 34, 1217 Vodice, Slovenija

Tel : 041 414 103, Tel : (01) 832 41 03, Fax : (01) 833 24 03, E - pošta : [navtex@siol.net](mailto:navtex@siol.net),

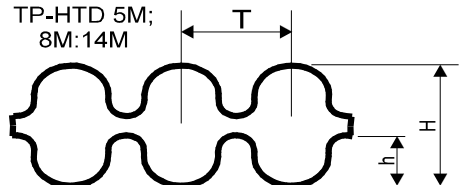
[www.navtex.si](http://www.navtex.si)

## - Zobati jermeni - HTD :

HTD 3M;5M;  
8M;14M;20M



TP-HTD 5M;  
8M;14M



PROFIL :	T	H	h
<b>HTD 3 M</b>	3,0	2,4	1,17
<b>HTD 5 M</b>	5,0	3,6	2,1
<b>HTD 8 M</b>	8,0	5,6	3,38
<b>HTD 14 M</b>	14,0	10	6,1
<b>HTD 20 M</b>	20,0	13,2	8,4
<b>TP-HTD 5 M</b>	5,0	5,26	2,1
<b>TP-HTD 8 M</b>	8,0	8,28	3,45
<b>TP-HTD 14M</b>	14,0	14,84	6,02

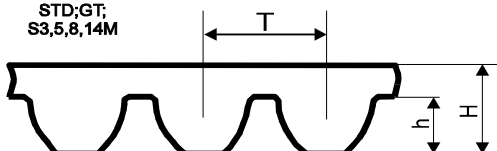
Standardne širine jermenov :
6,9,15 mm
9,15,25 mm
20,30,50,85 mm
40,55,85,115,170 mm
115,170,230,290,340 mm
9,15,25 mm
20,30,50,85 mm
40,55,85,115,170 mm

Primer označevanja: **1040 8M 30**

**1040** - Dolžina jermena (Lw 1040 mm), **8M** - Delitev 8 mm, **30** - Širina jermena (mm)

## - Zobati jermeni - STD; GT- MR; S3,5,8,14M

STD;GT;  
S3,5,8,14M



PROFIL :	T	H	h
<b>(S) 3 M</b>	3,0	1,9	
<b>(S) 5 M</b>	5,0	3,4	
<b>(S) 8 M</b>	8,0	5,3	3,05
<b>(S) 14 M</b>	14,0	10,2	5,3

Standardne širine jermenov :
6,9,15 mm
9,15,25 mm
12,21,36,50,62 mm
20,37,68,90,125 mm

Primer označevanja: **(S) 8M 640 12**

**8M** - Delitev 8 mm, **640** - Dolžina jermena (Lw 640 mm), **12** - Širina jermena (mm)

- Vsi podatki v tabelah brez podane merske enote so v mm.

- Možna so odstopanja pri podanih debelinah jermenov ( Odvisno od materiala in proizvajalca.)